

Model	Specs	TD 13HR	TG 7SS	TG 9HR	TG 10HR	TG 11HR	TG 13HR	TG 13VSHR	TG 14HRDC	TG11SSHR	TG11SSVHR	TNG AG	TG10hr
1-Total Length	1650 mm	1350 mm	1350 mm	1070 mm	1070 mm	1350 mm	2005 mm	2005 mm	2005 mm	2005 mm	2005 mm	1450 mm	2350 mm
2-Working Length	1370 mm	1070 mm	1070 mm	1070 mm	1070 mm	1070 mm	1725 mm	1725 mm	1725 mm	1725 mm	1725 mm	1170 mm	2000 mm
3-Insertion tube outer diameter	12.7 mm	9.4 mm	9.4 mm	9.7 mm	11.4 mm	11.4 mm	12.7 mm	12.7 mm	13.8 mm	11 mm	11 mm	6.8 mm	10 mm
4-Insertion tube distal end	13 mm	9.4 mm	9.4 mm	9.7 mm	11.4 mm	11.4 mm	13 mm	13 mm	13.8 mm	11 mm	11 mm	6.8 mm	10 mm
5-Instrument channel inner diameter	4.5 mm	3 mm	3 mm	3 mm	3 mm	3 mm	4 mm	≈ 4.5 mm	2.8 & 3 mm	3 mm	3 mm	2.6 mm	3 mm
6-Range of distal end bending	Ups= 180° Down 120° Right 120° Left 120°	Ups= 240° Down 120° Right 120° Left 120°	Ups= 240° Down 120° Right 120° Left 120°	Ups= 240° Down 120° Right 120° Left 120°	Ups= 240° Down 120° Right 120° Left 120°	Ups= 240° Down 120° Right 120° Left 120°	Ups= 180° Down 180° Right 160° Left 160°	Ups= 180° Down 180° Right 160° Left 160°	Ups= 180° Down 180° Right 160° Left 160°	Ups= 180° Down 180° Right 160° Left 160°	Ups= 180° Down 180° Right 160° Left 160°	Ups= 180° Down 180°	Ups= 180° Down 180° Right 140° Left 140°
7-Depth of field	2 100 mm	2 100 mm	2 100 mm	2 100 mm	2 100 mm	2 100 mm	2 100 mm	2 100 mm	2 100 mm	2 100 mm	2 100 mm	2 100 mm	2 100 mm
8-Field of view	140°	140°	140°	140°	140°	140°	140°	140°	140°	140°	140°	120° mm	140° mm
9-Direction of view	45°oblique viewing 1 mm	0°forward viewing 1 mm	0°forward viewing 1 mm	0°forward viewing 1 mm	0°forward viewing 1 mm	0°forward viewing 1 mm	0°forward viewing 1 mm	0°forward viewing 1 mm	0°forward viewing 1 mm	0°forward viewing 1 mm	0°forward viewing 1 mm	0°forward viewing 1 mm	0°forward viewing 1 mm
10-Minimum visible distance	Yes	Yes	Yes	Yes	Yes	Yes	Yes	Yes	Yes	Yes	Yes	Yes	Yes
11-High frequency compatibility	Yes	Yes	Yes	Yes	Yes	Yes	Yes	Yes	Yes	Yes	Yes	Yes	Yes
12-Scope ID	Yes	Yes	Yes	Yes	Yes	Yes	Yes	Yes	Yes	Yes	Yes	Yes	Yes
13-Automated auxiliary water channel for washing	optional	optional	optional	optional	optional	optional	optional	optional	optional	optional	optional	optional	optional
14-Auxiliary light	Yes	Yes	Yes	Yes	Yes	Yes	Yes	Yes	Yes	Yes	Yes	Yes	Yes
15-Magnification	Digitally	Digitally	Digitally	Digitally	Digitally	Digitally	Digitally	Digitally	Digitally	Digitally	Digitally	Digitally	Digitally
16-Built in leak test	Optional	Optional	Optional	Optional	Optional	Optional	Optional	Optional	Optional	Optional	Optional	Optional	Optional
2 T12 tone image (display of abnormal cells)	optional	optional	optional	optional	optional	optional	optional	optional	optional	optional	optional	optional	optional

ENDSCOPE Video System TS.SERIES

One Industry All Solution

ABOUT US and what are our services.

Si-Tech and I&A A medical supplies company was established in 1998 in the field of Flexible Endoscope for the Colon and Stomach, as well as the Portable Endoscope, the Ventilator (E-VENT BI), High Flow Nasal Cannula, Diathermy led, and Washer Disinfector, and other modern medical devices.

General use

Endoscopy is a nonsurgical procedure used to examine a person's digestive tract. Using an endoscope, a flexible tube with a light and camera attached to it, your doctor can view pictures of your digestive tract on a color TV monitor.

Structure composition

Structure of the endoscope The basic design of most flexible endoscopes consists of a light guide connector, an umbilical or universal cord, a control body, an insertion tube with internal channels, and a bending section that houses many

Description

- Communication unit
- Control unit
- Diagnostic unit
- LED screen
- Computer
- Processor screen
- Tower metal
- keyboard
- Suction device



Contacts European Factory : Amriya Alexandria, Cairo desert road Km 25 Alexandria - Egypt



(+03) 4701001/03

Fax:034701003

www.pharco.org

Contacts I&A

2A El-Kaliefia Elmamon, Street Masr Elgededa , Cairo ARE

(+02) 24537297

dr.lsmail@iand-a.com

www.iand-a.com

➤ All Variety of Designs and Callbres



The High Degree of distal and enge deflection of the gastroscope (up 190 down 100 right 100 left 100) give us high agility in the fundus, cardia and pylours.



Both autoclavable

the air water and suction valvas or TS series with stainless body to establishe the ideal preconditions for the highest standard of sterillity for improved hygiene.



➤ The Controle grip comes in a new sweetable light weight shape that fit perfectly in the hand allowing all functions by just thre fingers.



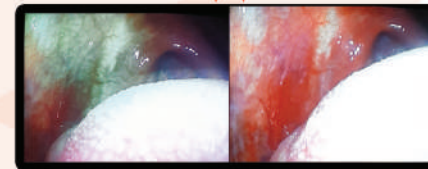
Colored CCD Digital Vedio System VGA Series

- Full Screen Display of high Definition images.
- Built in leak test with pressure gauge by mm Hg.
- Built in automatic water flush for powerfull continous rinsing the internal organs .
- Tow alternatives for the light.
- High beam Illumination to 15 cm working distance.
- High beam Illumination to 1 mm till 10 cm working distance.
- 9 Levels of air power.
- Smart complete informative touch screen display.



2 T I (2tone image)

2 T I (2 tone image) it is newaly developed illumination system for early detection of abnormal cells.



2 TONE IMAGE COMPARISON

1- Mobile Workstation

- Monitor selection and position
- Equipment on/of switch
- Maneuverability (wheels)
- Double water bottle holder
- Double scope holder
- Electrical saftey
- Rear Panel
- Keyboard tray
- Umbilical cord holder
- Cable management

2- Vedio Processor and light source: VPLTS (RW)

- 9 Level air control
- Camera on/of
- Information touch screen
- Digital auxiliary water pump and tank for washing (optional)
- Auxiliary light with 9 level controls for brightness control
- USB inlet
- Leak test with alarm (optional)
- DVD + rewritable (optional)

3- Informative touch screen 16:22

- Touch screen LCD Monitor (optional)

4- Colored Printer (Optional)

5 - Touch screen portable compact workstation:PCTS

- This is an extermely light weight portable videoscop with touch screen light source and processor in on 'Bag it includes:

- 1- Laptop touch screen you can Capture images , Record video and zoom in 3 levels.
- 2- Vedio Processor and light source.
- 3- LCD Screen.
- 4- Suction source.
- 5-USB storage locations.

